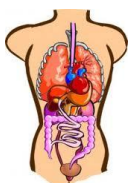


# Insight Millennium

The Insight Millennium helps detect any possible dysfunction/interference to the nerves that go to every cell, tissue, organ and system in the body.

## Insight Infrared Thermal Scanner:



- Measures and compares skin temperature on each side of the body. It is important to know that it measures the part of your nervous system that regulates your organs and glands of your body, the autonomic nervous system. It is critical to know that your organs and glands are getting adequate nerve signals so that they function properly. If they aren't, it can lead to a decline in health.

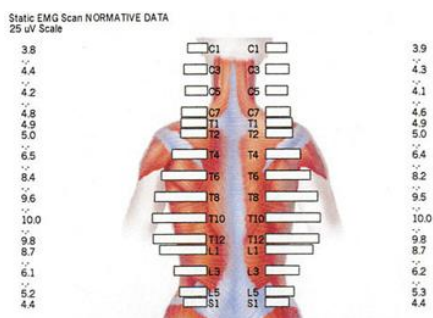
## Insight Surface Electromyography (EMG):



- When muscles contract, they give off an electrical signal. These electrical signals are indicative of how the motor system is functioning. When you are overstressed and subluxated, the motor system starts to overcompensate and loses efficiency. This results in loss of energy and a decline in health. It also looks at the patterns of muscle functions around your spine to help determine what your care needs are.

The Insight Millennium acts as a baseline to help track results of your care. Typically you will go through a series of adjustments and from time to time follow up with Insight scans to monitor progress. If the initial patterns are changed or reorganized this is a sign that the body is releasing old patterns and now with more care has the ability to develop newer and healthier patterns.

Normal Healthy Scan



Nervous System Dysfunction

